

## GENERAL INFORMATION:

The Revomat is a system developed by the Carbontech engineers to safely and efficiently provide the correct cure cycles for the Revowrap range of products. The system consists of two subsystems: The Revomat Controller and the Revomat Silicone Heating Mat.

### REVOMAT CONTROLLER

Product code	Description
RMC-1	Revomat MC

#### Revomat Controller Input Data:

- |  |  |
|--|--|
| <ul style="list-style-type: none"> <li>• Design Number</li> <li>• Job Site Information</li> <li>• Date/Time</li> </ul> | <ul style="list-style-type: none"> <li>• Product Cure Cycle</li> <li>• Technical ID Number</li> <li>• Quality Control</li> </ul> |
|--|--|

### Revomat Controller Technical Data

#### Specifications

Controller waterproof	IP55
Controller intrinsically safe	No
Controller internal operating temperature	Ranging from 40°C to 60°C
Controller dimensions	H-445mm          W-295mm          D-225mm
Controller mass	15,1kg
Wheeled trolley	Available
Number of mats that can be run off a single controller	One
Maximum internal operating temperature	65°C
Housing material	Powder coated steel
Operation position	Any, orientation insensitive
Shock resistance	≤ 2g
Vibration resistance	3,5-5mm @ 8Hz

#### Preprogrammed curing cycles

Revowrap 110	80°C	8 hours
Revowrap 185	120°C	2 hours
	160°C	4 hours
Revowrap 225	120°C	3 hours
	180°C	3 hours

#### Input

	Line frequency 50Hz	Line frequency 60Hz
--	---------------------	---------------------

Number of phases	One	
Rated voltage	180-264VAC	100-264VAC
Rated current	17,5A(230VAC)	17A(115VAC)

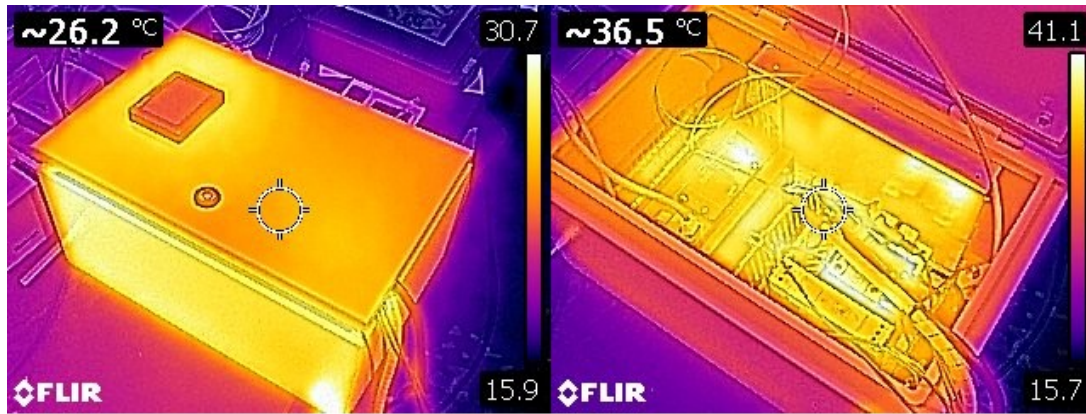
#### Output

	Line frequency 50Hz	Line frequency 60Hz
--	---------------------	---------------------

Voltage	48VDC	48VDC
Rated current	31,3A	32A
Rated power	1502,4W	1536W
Ripple and noise (maximum)*	150mVp-p	200mVp-p
Voltage adjustment range	43,2-56V	±5% typical adj. by voltage range
Voltage tolerance**	±1%	±1%
Line regulation	±0,5%	±0,5%
Load regulation	±0,5%	±0,5%
Setup (rise time)	150ms (12ms/230VAC @ full load)	1500ms (100ms @ full load)
Hold up time	26ms/230VAC @ full load	16ms @ full load
Over volt protection	57,6-67,2V (shutdown)	57,6-67,2V (shutdown)

\*The ripple and noise are measured at 20Hz of bandwidth by using a 12" twisted pair-wire terminated with a 0,1μF and 47μF parallel capacitor.

\*\*The tolerance includes the setup tolerance, line regulation and load regulation.



## REVOMAT SILICONE HEATING MAT

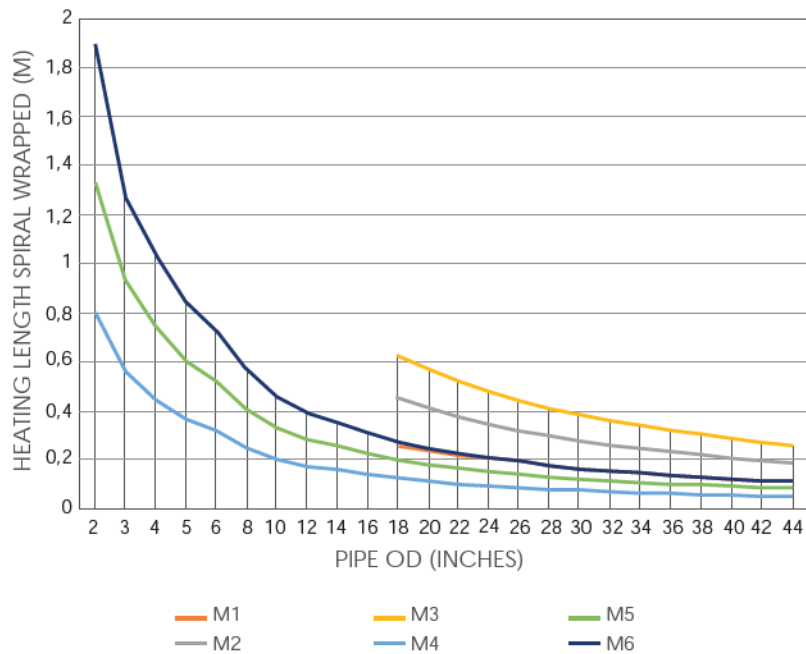
Product code	Description	Mass
RMA-1	Revomat M1 (360 x 1260mm)	3.5kg
RMA-2	Revomat M2 (360 x 2100mm)	6kg
RMA-3	Revomat M3 (360 x 2940mm)	8.45kg
RMA-4	Revomat M4 (160 x 1260mm)	1.6kg
RMA-5	Revomat M5 (160 x 2100mm)	2.9kg
RMA-6	Revomat M6 (160 x 2940mm)	3.5kg

## Revomat Silicone Heating Mat Technical Data\*

### Specifications

Input voltage	48V DC
Bending radius	r-25mm
Maximum temperature	190°C
Curing pipe diameter range	1/2"-42"
Geometries that can be cured	Straights, Elbows, Y's, T's

## REVOMAT COVERAGE



\*MSDS and TDS on silicone can be made available on request.